

JULY 2025



## CONNECTED TO MAKE A DIFFERENCE

# THE NORTH COUNTY COOPERATIVE PARISH COMMUNITY VOICE

### Parish Churches

Linthicum Heights UMC  
200 School Lane  
Linthicum, MD 21090

Ferndale UMC  
117 Ferndale Road  
Glen Burnie, MD 21061

Harwood Park UMC  
6635 Highland Avenue  
Elkridge, MD 21075

Messiah UMC  
7401 E. Furnace Branch Road  
Glen Burnie, MD 21060

Solley UMC  
7600 Solley Road  
Glen Burnie, MD 21060

### Our Pastors

Senior Pastor  
Michael Bynum  
240-344-4532  
pastormichael@lhumc.org

Associate Pastor  
Bisi Adebesein

### PARISH OFFICE

410-859-0990

OFFICE@LHUMC.ORG

### Community Worship Schedule

#### SUNDAYS

8:45AM at Harwood Park UMC

9:00AM at FUMC

9:00AM at LHUMC (Hybrid)

9:00am at Solley (Traditional)

11:00AM at Messiah UMC

11:00AM at LHUMC (Traditional)



# Thank You Pastor Belt and Pastor Kimberly

As a church family, we give thanks for the faithful leadership and loving service of Pastor Belt and Pastor Kimberly. Your time with us has been a gift — filled with grace, wisdom, and unwavering dedication to God's people. Now, as you step into new chapters of ministry, we send you forth with our love and prayers. Now, as you step into new chapters of ministry, we send you forth with our love and prayers.

Though you may be serving elsewhere, you will always be part of our story.  
Thank you, Pastor Belt and Pastor Kimberly. We love you, we bless you, and we will miss you dearly.



---

## Welcome Pastor Bisi



Pastor Bisi brings a wealth of experience and a passion for ministry. She is currently completing her Master of Divinity at Wesley Theological Seminary in Washington, D.C., where she will graduate this coming Monday and be commissioned as a provisional Elder in the Baltimore-Washington Conference at our Annual Conference this week. Pastor Bisi has served as the Ministry Intern at Oak Chapel United Methodist Church, actively supporting their Food Hub Ministry. Additionally, she has held various significant lay leadership positions within the United Methodist Church, including serving as a Certified Lay Speaker and teaching both adult and youth Sunday school and Bible study classes. On a personal note, those who know Pastor Bisi emphasize her pastoral heart, maturity in discipleship, collaborative spirit, and particularly her calming presence—qualities that will undoubtedly enrich our parish.

# Welcome Solley!

Solley United Methodist Church, formed in 1873, this year we celebrate 152 years of serving our community. Our membership is comprised of descendants of our original founders, descendants of the central European immigrants drawn to the community in the early 1900's, descendants of post World War II families of supporting the war efforts and staying in the 1940's, and our new day family members. Whereas we are surrounded by thousands of new homes on the Marley Neck peninsula, our weekly average attendance is 25. Small but purpose driven, we are founding partners and continued supporters of both NCEON and Arundel House of Hope. With our direct neighbor being Solley Elementary School, our food for thought program has allowed us to contribute to many area children. Our prayer blanket ministry continues to be far reaching. We are excited to join to North County Community Parish and the opportunities that it may offer.


7600 Solley Rd, Glen Burnie, MD 21060




Solley United Methodist Church is actively serving through many impactful mission opportunities—and there's a place for you to get involved!

 **Worship With Us:**

Join us for Traditional Worship on Sundays at 9:00 AM.

 **Love to Sing?**

Come early for Choir Rehearsal at 8:30 AM—all are welcome to lift their voices in praise!

 Check out the pages below to see how Solley is making a difference and discover all the amazing ways you can be part of our mission-driven community.

# Solley Making A Difference

Read below to learn how Solley's many outreach ministries are serving the people in our communities. As part of our parish, these are now opportunities for us all to connect and serve.



Solley supports the Caring Cupboard LLC in Pasadena, MD which serves people in the triangle of North Pasadena, Part of Glen Burnie & Curtis Bay Neighborhoods. They have a great need for supplies.

They are located at  
8513 Fort Smallwood RD,  
Pasadena, MD 21122





## SUMMER WISH LIST

Summer is here !!  
We are looking to stock up our shelves and many are running low.

Perishable items <small>drop-off during open hours or make arrangements</small>	Everyday items
<input type="checkbox"/> Milk	<input type="checkbox"/> Cereal
<input type="checkbox"/> Bread	<input type="checkbox"/> Pop-Tarts
<input type="checkbox"/> Cheese	<input type="checkbox"/> Pancake Mix
<input type="checkbox"/> Eggs	<input type="checkbox"/> Oatmeal (reg. & instant)
<input type="checkbox"/> Yogurt	<input type="checkbox"/> Canned Meats <small>Spam, Tuna, Chicken Breast etc...</small>
<input type="checkbox"/> Hot dogs	<input type="checkbox"/> Pasta Sauces
<input type="checkbox"/> Frozen Waffles	<input type="checkbox"/> Pasta
<input type="checkbox"/> Chicken nuggets	<input type="checkbox"/> Canned Soups
<input type="checkbox"/> ground beef	<input type="checkbox"/> Macaroni & Cheese
<input type="checkbox"/> Lunchmeat	<input type="checkbox"/> Peanut Butter
<input type="checkbox"/> Fruit	<input type="checkbox"/> Jelly
<input type="checkbox"/> Chicken	<input type="checkbox"/> Canned Fruit / Fruit Cups
<input type="checkbox"/> Bacon	<input type="checkbox"/> Canned Soup
<input type="checkbox"/> Sausage	<input type="checkbox"/> Canned Spaghetti O's etc...
	<input type="checkbox"/> Ramen

Hygiene items	Easy Prep meal items
<input type="checkbox"/> Shampoo & Conditioner	<input type="checkbox"/> Mac & Cheese Cups
<input type="checkbox"/> Soap	<input type="checkbox"/> Chef Boyardee Microwavable Cups
<input type="checkbox"/> Body wash	<input type="checkbox"/> Dinty Moore meals
<input type="checkbox"/> Toothpaste & Toothbrushes	<input type="checkbox"/> Microwavable Soups
<input type="checkbox"/> Laundry Soap	<input type="checkbox"/> Ramen Cups
<input type="checkbox"/> Deodorant	
<input type="checkbox"/> Feminine Hygiene items	

During the summer we see a surplus of families especially with young children as they are home during the summer without the aide of school breakfast and lunch. We appreciate your help, together we do make a difference.

## Food for thought Program

Solley is serving two families from Solley Elementary School. They partner with Geresbeck's in Riviera Beach. The families are given vouchers to use at this location. You can make your donations via cash or check to Solley UMC and indicate on the envelope or check note line "Food for Thought". If you would like more info contact Debbie Lurz 410-336-9809 or Cindy Hackmann 410-446-9243 or email [info@solleyumc.org](mailto:info@solleyumc.org).

## Prayer Blanket Ministry

Solley provides these blankets for those who are ill, in despair or grieving as requested. They are prayed over at Sunday Services. If you know someone who needs a blanket or would like to provide the cloth used to make them, Check with Debbie Lurz 410-336-9809 or Cindy Hackmann 410-446-9243

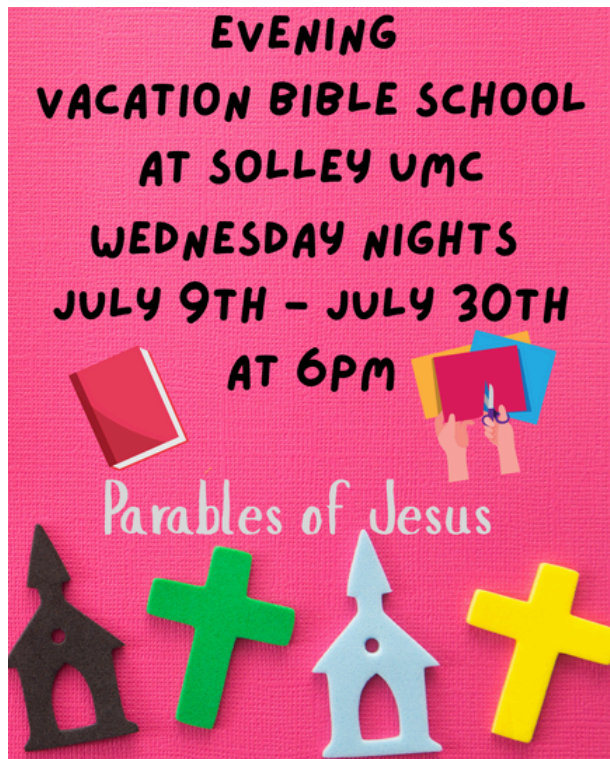


### Feeding the Homeless at Arundel House Of Hope

On the Third Thursday of each Month (July 17<sup>th</sup>) Solley serves a meal to the homeless at Arundel House of Hope in Glen Burnie:

7164 E Furnace Branch Rd suite A, Glen Burnie, MD 21060

Volunteers should arrive between 11:00-11:30am if you would like to help serve. Check with Debbie Lurz 410-336-9809 or Cindy Hackmann 410-446-9243 what you might donate. Please bring your donations for Feeding the Homeless to Church Services or call Debbie Lurz 410-336-9809 or Cindy Hackmann 410-446-9243 to arrange pick up or drop off. Donations of supplies for Summer weather are being accepted such as sunscreen, insect repellent, bottled water, personal hygiene items, cleansing wipes.



## Evening Vacation Bible School at Solley

Every Wednesday evening starting July 9th through July 30th at 6PM—we will be studying the Parables of Jesus.

Each night a different group of church members will prepare a lesson, skit or other presentation of a parable. The Craft will be geared for the parable. A light meal will be served. We have a list of suggested ones and a signup sheet for the presenters. Signup info for VBS attendees will be available at worship or Via email at [info@solleyumc.org](mailto:info@solleyumc.org)



## Hymn Sing at Emory Grove

Emory Grove is an historic Methodist Camp Meeting Ground that has held religious services every summer since its beginning in 1868.

Solley UMC has been making an annual trip to this historic site for Wednesday Night Hymn sings. This year they will be going on August 6th – They usually meet about 6pm for a picnic meal. The event begins at 7pm–

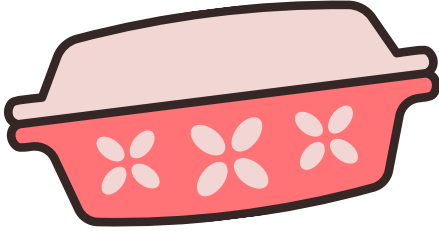
Susan Bengston featured vocalist.  
102 Waugh Ave, Glyndon, MD 21071

<https://www.emorygrove.net/>

# Make A Difference

---

## Casserole Ministry Outreach Program



LHUMC has been involved with this homeless outreach ministry for 5 years. We participate by making and packing food into containers. This is in coordination with BeMore Caring, which is a non-profit group based on Mercedes Drive in Hanover. We now have 40 families involved, including some who are not even members of our church. We help BeMore Caring once a month, which is the 2nd Friday of every month.

During the past 6 months, we prepared around 1,040 meals, which includes a healthy portion of a donated casserole, buttered slice of bread and fork that is sealed in a container. A bag of homemade cookies is included also.

We have 3 teams with between 10 to 12 on each team, which means that each team only has to make 1 or 2 casseroles every three months. We also have a faithful group of volunteers who come every month to help pack cookies, butter bread and pack containers. It is a time of fellowship and making a difference in the lives of many homeless. We currently are packing 200 meals each month.

With the numbers of meals being requested, the need for additional volunteers to make casseroles would really be appreciated. If you are interested in helping once every three months to make food, contact Cindy Butz or the church office.

"The best and most beautiful things in the world cannot be seen or even touched – they must be felt with the heart." Helen Keller

It takes a loving heart to reach out in the way our church family does through this Casserole ministry. Thank You!

---

**Join us at our next parish missions team meeting as we prepare our next steps in making a difference with love.**

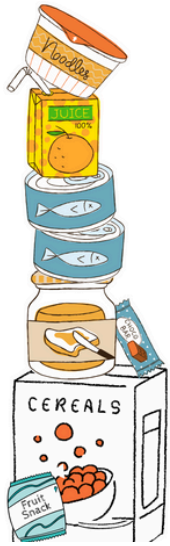
**MISSIONS TEAM MEETING**

**July 22 7:00pm @LHUMC**



# Make A Difference

---



## Food Donations Needed FOR NCEON & FERNDALE PANTRIES

Ferndale UMC distributes food from their pantry at their bimonthly Social Saturday, which are the 2nd and 4th Saturdays, between 9am and 11am.

### Our current needs are:

Can tuna, chicken, ham and beef.  
Corned beef hash  
Can carrots, peas and corn.  
Spaghetti sauce  
Peanut butter  
Jelly and Jams

Chicken Ramen noodles  
Skillet meals  
White rice  
Hamburger, tuna helper  
Pancake mix  
Cereals  
Syrups

### NCEON (North County Emergency Outreach Network)

Thank you for your continued support of NCEON. This program continues to offer support to our families in north Anne Arundel County with food and financial help, for such items as eviction, utilities and prescription aid. This is the 36th year that NCEON has been helping those in need in our communities. All this is accomplished by volunteers, many from our own church.

Ways that you may offer support include financial donations and items for the food pantry. For financial gifts, make check payable to LHUMC and in memo line, write NCEON. Additionally, the food pantry has the following needs:

Milk (powdered or shelf-stable)  
Canned ground coffee  
Boxes of tea bags  
Canned Chef Boyardee

Canned soups  
Boxes or bags of rice  
Ramen noodles  
Jars of jelly and peanut butter  
Instant mashed potatoes (Packages or boxes)

Often, homeless come to NCEON for food and ways we can help include:

Non-perishable food; ie, packets of tuna and chicken, granola bars, small cans of food with pop off lids, small containers of Mac & Cheese, snack packets of chicken or tuna salad with crackers.

“Do all the good you can, by all the means you can, in all the ways you can, in all the places you can, at all the times you can, to all the people you can, as long as you can.” Words by John Wesley

# Make A Difference

## Belle Grove Elementary School Supply request for 2025-26



It seems school just ended and summer soon begins. Also, this is a time during July and August that we are able to get some great bargains on school supplies. Our church family support for the children at Belle Grove began in 2009 and thanks to the love and compassion of so many of you, we continue to make a difference in the lives of the children there. A list of requested items are available on table in Narthex and door outside Fellowship Hall in west wing. Designated boxes for your donations are also located in these areas. Financial donations are welcomed also. They can be placed in offering boxes or sent to church office. Please designate for Belle Grove Elementary School in the memo line. We will collect items through August 24th. Any questions, contact Cindy Butz.

Jesus said, "Let the children come to me and do not stop them because the Kingdom of heaven belongs to such as these."  
Matthew 19:14

Pre-sharpened pencils	Colored pencils	Pencil boxes & pouches
Pens: blue or black ink	Crayons	Colored markers
Yellow highlighters	Erasers (block & pencil top)	Glue sticks
Wide ruled loose leaf paper	Composition books	Construction paper
Pocket folders (all colors)	Post it notes (all sizes, lined & unlined)	Index cards
Ziplock baggies (all sizes)	Clorox wipes	Liquid hand soap
Hand sanitizer	Scotch tape (dispenser fillers)	Boxes of Kleenex
Lunch boxes	Underwear & socks (age PK to Gr 5)	



## Operation Christmas Child July Update 2025

It's summertime. Think summer time fun and school supplies for your shoebox items.

We will be collecting: flip flops, sunglasses, 1 subject spiral notebooks, calculators, scissors, pens and pencil. You can purchase 4 pair flip flop at Dollar Tree for \$5.00. Watch for the school sales at Walmart, Staples and Office Depot for spiral notebook for under \$0.50. Help us put some fun in the shoeboxes.

We will continue to collect the following items to upcycle following into new items: hard eye glass cases, old T-shirts any color, pillow cases, sewing notions-double fold bias tape, rick-rack, thread etc. If you have any of the following items on hand at home, consider donating them also. All items can be placed in the Christmas wrapped box in the narthex.

Join us any Thursday from 6-8pm in the unity room for fellowship and to make items for the shoe boxes. No experience is necessary, we have all levels of projects. No meeting July 3rd.



## Social Saturday: Be the Hands and Feet of Jesus

Social Saturday is one of the most vibrant and impactful ministries in our parish. Twice a month, we connect with over 140 individuals, offering food, clothing, children's activities, and  
—most importantly—  
**the love of Christ.**

As followers of Jesus, we are called not just to believe, but to act. Social Saturday is a beautiful opportunity to live out that calling by meeting the practical and spiritual needs of our community.

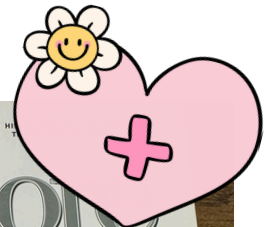
This ministry happens just a few hours on **the second and fourth Saturday of each month**—but the impact lasts far beyond that. And now, more than ever, **we need you**. If you've been searching for a meaningful way to serve, to respond to Christ's call, this is it.

Come and experience the joy of fellowship, the gratitude of those we serve, and the deep sense of purpose that comes from serving in God's Kingdom. **You don't need to sign up in advance—just show up at Ferndale at 8:30 AM on any second or fourth Saturday, and we'll show you how you can help.**

If you'd like more information, feel free to reach out to Amy Dye, amydy116@gmail.com, or contact the parish office. The need is growing—and so is the opportunity to make a difference. Please consider giving a few hours of your time. You'll be blessed—and you'll be a blessing.

Congrats to our very own Carol LaMere who is one of our Singers and Members of Messiah UMC. Carol was recognized in the May edition of a Baltimore Magazine for Excellence in Nursing. Carol is recognized as an Oncology Nurse at Ascension Saint Agnes Hospital Cancer Institute.

We see you, and we are so proud of you!



# NOTE FROM PASTOR MICHAEL



Living the Vision: Becoming Who We Say We Are

A new sermon series for a new season in the Parish

This summer, our Parish begins a new chapter. We are welcoming new leadership, building new relationships, and stepping more deeply into shared ministry. It's a moment of movement—and a moment to return to what grounds us.

We say these words in worship every Sunday, at the beginning and the end of Worship: "Through Grace, We Welcome All, Grow Together, and Make a Difference with Love."

But what do those words mean in our lives, in our churches, and in the community Jesus is calling us to build?

Beginning July 27 and continuing through August 31, we'll spend six weeks exploring the heart of our mission and vision as a Parish in a new sermon series called Living the Vision: Becoming Who We Say We Are.

Each week will focus on a different part of our shared identity:

- Through Grace (Ephesians 2:8–10)
- We Welcome All (Romans 15:7)
- Grow Together (Acts 2:42)
- Make a Difference (Matthew 25:40)
- With Love (1 Corinthians 13:3)
- Make Disciples Who Make Disciples (Matthew 28:19–20)

This series isn't about slogans or statements. It's about taking seriously the invitation of Jesus to live what we believe—not perfectly, but faithfully. Whether you've been here for decades or just arrived, this is a time to grow deeper in grace, stronger in community, and clearer in our calling.

We hope you'll join us in worship each week and let this series be a time of renewal, not just for our Parish, but for your journey with Christ.

Let's live the vision—together.

## Daily Devotional

Are you receiving the Daily Devotionals written by Pastor Michael? These are a wonderful way to stay connected and encouraged. If you are not receiving them, email [Office@lhumc.org](mailto:Office@lhumc.org) to be added to the directory.



Recently we received this feedback about the Daily Devotional email, "This is why I joined LHUMC because I feel like I belong. The church and people in it make me feel safe and at home. No better feeling than that!"

# Grow - Family Faith Formation

**RAMP 456 is an opportunity for preteens, in 4th-6th grade, to gather for fun and faith building.**

**We meet the first Sunday of each month, 4pm-5:30pm, in the LHUMC Fellowship Hall.**

**Contact Mary Beth Wynne for more information; [MBWynne@LHUMC.org](mailto:MBWynne@LHUMC.org)**



**R.A.M.P. 456 will meet on July 6, 4-5:30pm at LHUMC.**

**This ministry is open to all preteens in 4-6<sup>th</sup> grade. Friends are welcome. Each gathering includes fun and faith-building**

**To sign up for R.A.M.P. 456 go to [LHUMC.org/RAMP](http://LHUMC.org/RAMP)**

**The NCCP youth group is for teens in 7th-12th grades. During the summer months our meetings are infrequent as we replace them with fun outings. To stay up to date with our schedule join our mailing list:**

**[LHUMC.org/youth-group](http://LHUMC.org/youth-group)**



**We will not be having First Friday Family Fun Night on Friday July 4<sup>th</sup>.**

**We look forward to seeing you on August 1<sup>st</sup>. First Friday Family Fun Night is an fun opportunity for children and grown-ups to come together for food, fellowship and festivities with other families in our parish. Grandparents are welcome too! We do this in partnership with St John Lutheran Church.**

**An RSVP is required: [MBWynne@LHUMC.org](mailto:MBWynne@LHUMC.org)**

**Stay informed of all our children's & families' events  
Join our mailing list**





Giving kids a rock-solid foundation and pointing them to Jesus, their unmovable, unshakable friend forever.

**July 14-18**  
**9am-12pm**

Information and  
registration online:

**LHUMC.org/VBS**

Registration required,  
registration closes July 7th

Volunteers can also register  
online. Contact Mary Beth Wynne  
for more information.

**We are seeking volunteers  
for this adventure.**

If you would like to participate, you  
can register at [LHUMC.org/VBS](http://LHUMC.org/VBS)  
or reach out to Mary Beth Wynne;

[MBWynne@LHUMC.org](mailto:MBWynne@LHUMC.org)



**Volunteer Registration**

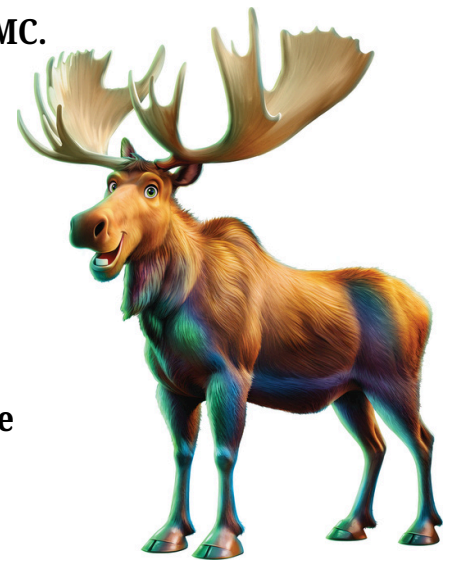
At TRUE NORTH VBS we will guide kids on the ultimate Alaskan adventure where northern lights glow over majestic mountains, racing rivers, and glistening glaciers. As kids trek the tundra, they'll explore how easy it is to lose sight of what's true in our wild world today. Pointing them toward Jesus, True North VBS shows them that he is a faithful friend we can always trust.

He's our True North!

Help us create this Alaskan back drop at VBS build days! Come for as little or as long as you can. We will meet downstairs at LHUMC.

**VBS Build Days**  
**Mondays & Wednesdays June 9<sup>th</sup> - July 9<sup>th</sup>**  
**4pm-8pm**

We average around 80 children each year for VBS. They enjoy science experiments, games, snacks, Bible adventures, and missions projects. The average cost per child is \$25. We are able to offer VBS free to families because of your continued support.



**There are three ways you can give.**

- You can place cash, in an envelope marked VBS, or a check, with VBS on the memo line, in the offering box.
- You can purchase some of these items and bring them to church by July 7th: Baby wipes, paper towels, painters tape, pool noodles, dish sponges, duct tape (any color).
- You can give online - please designate your gift for VBS
- You can purchase items from our Amazon Wishlist



**Amazon Wishlist**



**Donate online to VBS**

**Together, let's give kids a rock-solid foundation and point them to Jesus,  
their unmovable, unshakable friend forever.**

# GET CONNECTED



**SUNDAY JULY 13TH**  
**LHUMC WILL HAVE ONE WORSHIP**  
**CELEBRATION AT 10AM**  
*(all other churches will worship at regular times)*

**FOLLOWING WORSHIP WE WILL TRANSFORM LHUMC INTO AN**  
**ALASKAN WILDERNESS FOR VBS**  
**MANY VOLUNTEERS ARE NEEDED!!**



**Linthicum Concerts in the Park** 

**Sundays 5:30-7:30pm @ Linthicum Park (Benton Ave)**

June 29 - Randall Rivers - (Elvis, Country)  
July 6 - Demos from Memos - (Musical variety/Pop Tunes)  
July 13 - Back in the Saddle - (Country Duo)  
July 20 - Pet Rock - (60's to 90's Top Hits)  
July 27 - Mr. Charisma - (Iconic Crooners & Country hits)  
- Picnic July 27 (Hot Dogs, Chips, Drinks)  
August 3 - Clipper City Crew Stage Band (Big Band)



**Do YOU have what it takes to be a North County Cooperative Parish**

**TRIVIA CHAMPION?**

There's only one way to know

**COME and PLAY**

2025 competition starts  
Friday, July 25 @ Ferndale UMC 7:00-9:00

**And continues the 4th Friday of every month.**  
**Play as an individual, couple, family, or form a team.**



---

# Make A Difference

---

To give at Messiah you can use the QR code below, write a check, or give cash.



To give at Linthicum you can use the QR code to give online, write a check, or give cash.



To give at Ferndale you can use the QR code below, write a check, or give cash.



To give at Solley UMC C you can write a check, or give cash.

To give at Harwood Park you can write a check or give cash.

While financial giving is not the only way to contribute, many of you have recently asked us how you can support the church in this way. We are grateful for your generosity and want to offer some options for how you can give financially to support the work of the church and our ministries.

## COUNTERS NEEDED

CONTACT THE PARISH OFFICE IF  
YOU ARE INTERESTED IN  
HELPING WITH COUNTING THE  
TITHES AND OFFERINGS  
THAT COME INTO THE CHURCH.



## A Note from the Parish Office

A quick office update: With summer approaching and my three kids home from school, my office hours will be shifting a bit. There will be times when the office is open, but I'm working remotely. Even if I'm not at my desk, I'll still be reachable and available to help however I can. If you would like to visit the office, it is best to call and schedule a time.

Thank you for your continued support and understanding!

With gratitude,  
Jaimie



**Have you checked out the new online directory?  
Try logging in and see if your information is up to date.**

**[NCCP Directory LINK](#)**

**If you have trouble logging in or need help please email [Office@LHUMC.org](mailto:Office@LHUMC.org)**

**SUNDAY MORNING SLIDES AND ANNOUNCEMENT VIDEOS ARE COMPLETED ON  
TUESDAYS. THE DEADLINE FOR SUBMISSIONS IS MONDAYS.**

**THE DEADLINE FOR NEWSLETTER ARTICLES IS THE 25TH OF EACH MONTH.  
PLEASE SEND SUBMISSIONS TO THE PARISH OFFICE.**

# JULY 2025

## GET CONNECTED

SUNDAY	MONDAY	TUESDAY	WEDNESDAY	THURSDAY	FRIDAY	SATURDAY
		1	2 VBS Build LHUMC 4-8	3	4 4 <sup>th</sup> of July	5
6 R.A.M.P. 456 4-5:30PM LHUMC	7 VBS Build LHUMC 4-8	8	9 VBS Build LHUMC 4-8 VBS 6PM AT SOLLEY	10 OCC project 6pm	11	12 Social Saturday 9-11 FUMC
13 VBS Build LHUMC 11am	14 VBS 9-12 at LHUMC	15 VBS 9-12 at LHUMC	16 VBS 9-12 at LHUMC VBS 6PM AT SOLLEY	17 VBS 9-12 at LHUMC SERVING AT AOH 11AM OCC project 6pm	18 VBS 9-12 at LHUMC	19
20	21	22 We Are His Hands His Feet NCCP MISSIONS TEAM MEETING 7PM	23 VBS 6PM AT SOLLEY	24 OCC project 6pm	25 Trivia Challenge 7-9pm	26 Social Saturday 9-11 FUMC
27	28	29	30 VBS 6PM AT SOLLEY	31 OCC project 6pm		

