

2025-07-20

Ferndale,
Messiah,
LHUMC Hybrid

Piano/Vocals

Victory In Jesus

Words and Music by
Eugene M. Bartlett

VERSE

♩ = 124

D Em/D D D/F# G G/B



1. I heard an old, old sto - ry, how a Sav - ior came from
2. I heard a - bout His heal - ing, of His cleans - ing pow'r re -
3. I heard a - bout a man - sion He has built for me in



glo - ry, how He gave His life on Cal - va - ry to save a wretch like me. I
veal - ing, how He made the lame to walk a - gain and caused the blind to see. And
glo - ry, and I heard a - bout the streets of gold be - yond the crys - tal sea; A -



heard a - bout His groan - ing, of His pre - cious blood's a - ton - ing, then
then I cried, "Dear Je - sus, come and heal my bro - ken spir - it," and
bout the an - gels sing - ing, and the old re - demp - tion sto - ry; And

CHORUS



I re - pent - ed of my sins and won the vic - to - ry. O vic - to - ry in
some - how Je - sus came and brought to me the vic - to - ry.
some sweet day I'll sing up there the song of vic - to - ry.



Je - sus, my Sav - ior for - ev - er! He sought me and bought me with His re - deem - ing

CCLI Song # 1259

© Words: 1939 Mrs. E.M. Bartlett. Renewed 1967 Albert E. Brumley And Sons | Music: 1939 Mrs. E.M. Bartlett. Renewed 1967 Albert E. Brumley And Sons
For use solely with the SongSelect® Terms of Use. All rights reserved. www.ccli.com

CCLI License # 1556526

24

A D G/D D D7 G G/B G/D D

blood. He loved me ere I knew Him, and all my love is due Him. He

29

Em/G D/A A7 D

plunged me to vic - to - ry be - neath the cleans - ing flood.

Sing Sing Sing

Words and Music by
Chris Tomlin, Jesse Reeves, Matt Gilder,
Daniel Carson and Travis Nunn

CHORUS 1a

♩ = 148

♩ E5



C#m7



TURNAROUND 1

1

Bsus

A5

E5

Last time to Coda ♯



TURNAROUND 2

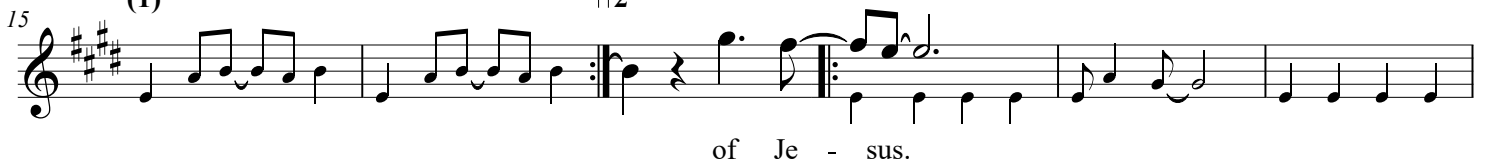
(1)

| 2

E5

Esus E

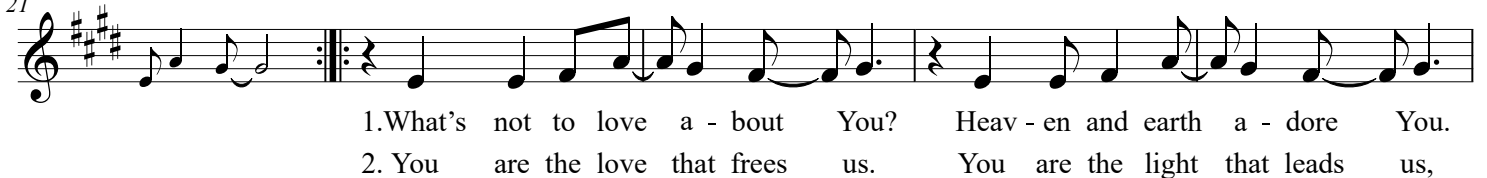
E5



VERSE

Esus E

E5



CCLI Song # 5114065

© 2008 Rising Springs Music | Vamos Publishing | worshiptogether.com songs | Ryan House Music
For use solely with the SongSelect® Terms of Use. All rights reserved. www.ccli.com

CCLI License # 1556526

26 C#m7 Bsus

Kings and king - doms bow down. Son of God, You are the One,
like a fi - re burn - ing. Son of God, You are the One,

TURNAROUND 1

1

31 A5 E5

You are the One we're liv - ing for.
You are the One

TURNAROUND 2

36 (1) 2 E5 Esus E

we're liv - ing for.

41 E5 Esus E D.S. al Coda

We will

INSTRUMENTAL

43 Coda E5 Esus E D2(no3)

of Je - sus.

47 A2(no3) E5 (bass only)

CHORUS 1b

E5

(1st x bass only)

53

Sing, sing, sing, and make mu-

C#m7

58

sic with the heav - ens. We will sing, sing, sing, grate - ful that You hear

TURNAROUND 3

1

63

us when we shout Your praise. Lift high the name of Je - sus.

OUTRO

(1)

2

69

We will of Je - sus. _____

E5

Esus

E

E

75

Sanctuary

Words and Music by
John W. Thompson
and Randy Scruggs

♩ = 46

D/A Em/A D

A

G

Em⁷



Lord, pre - pare me to be a sanc - tu - ar - y, — pure and ho - ly, tried and

4

D

A

F#m/A Em/A

D



true; — With thanks - giv - ing, I'll be a

6

A

G

Em⁷

F#m/A A⁷

D



liv - ing — sanc - tu - ar - y for — You.

Sing Wherever I Go

(based on the recording by We The Kingdom | original key - A)

Words and Music by
Andrew Bergthold, Ed Cash,
Franni Cash, Kyle Briskin,
Martin Cash and Scott Cash

♩ = 166

N.C.

CHORUS

A

(1st x - a cappella)



All ____ my life, all ____

4

D

A

E^{sus}



____ I know, God's ____ been good, good ____ to my soul. ____ Moun-

7

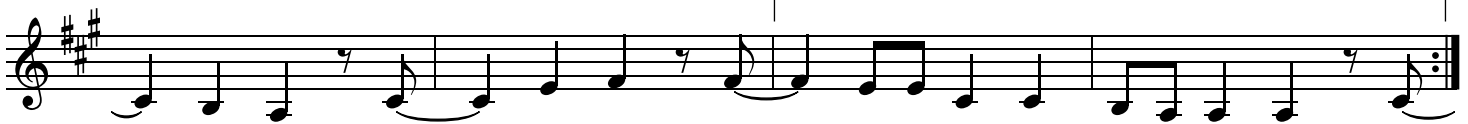
F#m⁷

D^{2(no3)}

1.

E^{sus}

A



- tain high, val - ley low, I'm ____ gon-na sing wher - ev - er I go. All

11

2.

E^{sus}

A



____ gon - na sing wher - ev - er I go.

1. God is
(2. He's my)

VERSE

15

F#m⁷

D



for me, ____ He's not a - gainst me. ____ I will
heart - song ____ in my sor - row. ____ He's my

[illegible]

23 F#m⁷ D

bro - ken, _ He will fix me. _ I will
storms rise _ all a - round me, _ I will

27 A E^{sus} D

The musical notation shows four measures. Measure 27 starts with a treble clef, key signature of two sharps (F# and C#), and a common time signature (C). The notes are G4 (quarter), A4 (half), B4 (quarter), and C5 (half). Measure 28 has a whole note chord E4-G4-B4 with a sus symbol above it. Measure 29 has a whole note chord D4-F#4-A4. Measure 30 has a whole rest followed by a quarter rest and then a half note G4.

call on the name of the Lord.
call on the name of the Lord.

All


§ CHORUS

[illegible]

34 E^{sus} F#m⁷ D²(no3) 1.

— to my soul. — Moun - tain high, val - ley low, I'm — gon-na sing wher -

38 E^{sus} A 2, 3.



-ev - er I go. 2. He's my gon - na sing wher -

CHORUS

42 E^{SUS} A A D A
 (Last x - a cappella)

-ev -er I go. All ___ my life, all ___ I know, God's ___ been good, good

46 E^{sus} $F\#m^7$ Last time to Coda \oplus $D^2(no3)$

— to my soul. — Moun - tain high, val - ley low, I'm — gon-na sing wher -

50 E^{sus} A D

BRIDGE

-ev - er I go. I got joy, joy, joy sing, sing, sing

56 N.C. A

deep in — my soul!
wher - ev - er I go!

59 1. $F\#m^7$ A/E 2. D/A D.S. al Coda

I will All —

62 \oplus Coda E^{sus} A

— gon - na sing wher - ev - er I — go.