

2025-07-13

Ferndale,
LHUMC,
& Messiah

Piano/Vocal

Love The Lord

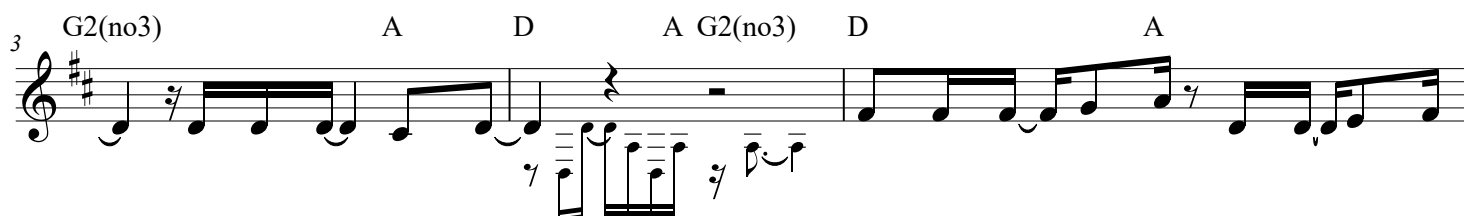
Words and Music by
Lincoln Brewster

VERSE 1 & 2



1. Love the Lord, your God, with all your heart, with all your soul, with all your mind,

2. I will serve the Lord with all my heart, with all my soul, with all my mind,



and with all your strength;

and with all my strength;

Love the Lord, your God, with all your heart,

I will serve the Lord with all my heart,



with all your soul, with all your mind, and with all your strength. With all your heart,

with all my soul, with all my mind, and with all my strength; With all my heart,

CHORUS 1 & 2



with all your soul, with all your mind, with all your strength;

with all my soul, with all my mind, with all my strength;



Love the Lord, your God, with all your heart, with all your soul, with all your mind,

I will serve the Lord, with all my heart, with all my soul, with all my mind,

CCLI Song # 4572938

© 2005 Integrity's Praise! Music

For use solely with the SongSelect® Terms of Use. All rights reserved. www.ccli.com

CCLI License # 1556526

INSTRUMENTAL 1

15 G2(no3) A D A G2(no3) D A Bm7 D/F#

and with all your strength.
and with all my strength.

INSTRUMENTAL 2

19 G2(no3) A D A G D

23 D/G Bm7

BRIDGE

27 D/G D D/G

I will love You; (I will love You;)

33 Bm7 D/G D D/G

I will praise You; I will serve You; (I will praise You;) (I will

40 Bm7 D/G A Asus

serve You;) I will trust You, Lord. With all my heart,
(I will trust You.)

CHORUS 3

D/G A G2/B A/C#

with all my soul, with all my mind, with all my strength; With all my heart,

49 D/G A G2/B A/C#

with all my soul, with all my mind, with all my strength;

53 D A Bm7 D/F#

I will love You, Lord, with all my heart, with all my soul, with all my mind,

55 G2(no3) A D A G2(no3) D A

and with all my strength; I will love You, Lord, with all my heart,

58 Bm7 D/F# G2(no3) A D

with all my soul, with all my mind, and with all my strength. _____

This House

(based on the recording by Anne Wilson)

Words and Music by
Anne Wilson, Bryan Fowler
and Micah Kuiper

♩ = 75

INTRO

F C/E Cm/E♭ Dm C



VERSE 1

F C

1. Pain will come, _____ tears will flow, _____

4 Dm⁷

Am F C Dm⁷ Am



— sor-row's gon-na fight for my soul, _____ but Heav-en knows _ where I stand. —

7 F

C Dm⁷ Am



Rains will pour, _____ winds will blow, _____ floods are gon - na rise, oh, I know, _____

PRE-CHORUS

9 F

C Dm⁷ Am Am G/B C C/E



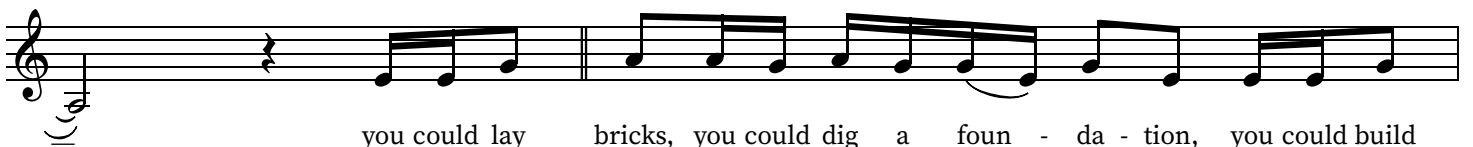
— but hope ain't built _ on sink-ing sand. _____ I've seen e - nough _ to know _____



CHORUS 1a

12 F

F C



you could lay bricks, you could dig a foun - da - tion, you could build

14 Dm⁷ Am F C/E Cm/E^b Dm⁷

up ten thou-sand feet tall, but if it don't stand on the word of the Lord, this house gon-na

16 C F C F C

fall. You could put a cross right up on the stee-ple, you could stain

18 Dm⁷ Am

glass on ev-ry wall, but if it don't

2nd time to Coda ⊕

19 F C/E Cm/E^b Dm⁷ C F C

stand on the word of the Lord, this house gon-na fall.

VERSE 2

21 F C Dm⁷ Am

2. Emp-ty words _____ are like emp-ty rooms, _ you can have it all, but it on-ly proves

23 F C Dm⁷ Am

that with-out love, _ it's just _ for show. _____

25 F C Dm⁷ Am

And you can give _____ it all a-way. _____ You can e-ven do it in Je-sus' name, .

27 F C Dm⁷ Am D.S. al Coda

— but with-out love, — you're gon-na do it a-lone, — yeah. — You could lay

29 F C/E Cm/Eb Dm⁷ C F C C

⊕ Coda

stand on the word of the Lord, this house gon-na fall. My hope is built — on

32 Bb F C

noth- ing less — than Je- sus' blood, — my right-eous-ness. — I

35 Bb F

dare — not trust — the sweet- est frame, — but whol- ly lean — on Je- sus' —

38 C Bb

name. My hope — is built — on noth- ing less — than

41 F C

Je- sus' blood, — my right-eous-ness. — I dare — not trust — the

44 Bb F C

sweet- est frame, — but whol- ly lean — on Je- sus' — name, Je- sus' name. — You could lay

CHORUS 1b

47 N.C.



bricks, you could dig a foun - da - tion, you could build up ten thou-sand feet tall, but if it don't

49 F C/E Cm/Eb Dm⁷ C F C

stand on the word of the Lord, this house gon - na fall, this house gon - na fall. You could lay

CHORUS 1a

51 F C Dm⁷ Am

bricks, you could dig a foun - da - tion, you could build up ten thou-sand feet tall, but if it don't

53 F C/E Cm/Eb Dm⁷ C F C

stand on the word of the Lord, this house gon - na fall. You could put a

55 F C Dm⁷ Am

cross right up on the stee - ple, you could stain glass on ev - 'ry wall, but if it don't

57 F C/E Cm/Eb Dm⁷ C F C

stand on the word of the Lord, this house gon - na fall. If it don't

59 TAG

F C/E C/E \flat Dm⁷ C

stand on the word of the Lord, this house gon - na fall.

Detailed description: The image shows a musical score for a single staff. The staff begins with a treble clef and a key signature of one flat (B-flat). The melody consists of eighth and quarter notes. Chords are indicated above the staff: F, C/E, C/E-flat, Dm7, and C. The lyrics are written below the staff, with a horizontal line under the word 'house' indicating a continuation of the melody. The score ends with a double bar line.

(based on the recording by Bryan & Katie Torwalt)

**Cody Carnes, Bryan Torwalt,
Katie Torwalt and Paul Duncan**

INTRO


♩ = 190 Am7 G4 F C Dm7 Gsus C

VERSE 1

8

F/C C Am7

1. Your king - dom is sim - ple, as sim - ple as love. You wel - comed the

13 

19
 does. Your king - dom is sim - ple, Lord, teach it to us.

VERSE 2

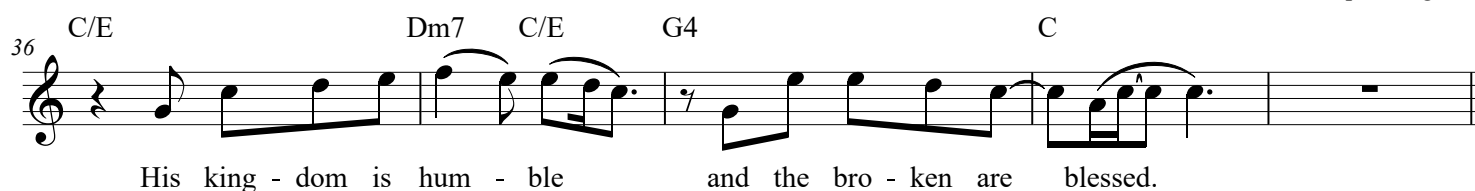
24 F/C C Am F C
2. Your king - dom is hum - ble, as hum - ble as death. His King is a sav - ior

30

G Gsus G Am7 G4 F

who gave His last breath, so may we die dai - ly, our pride laid to rest.

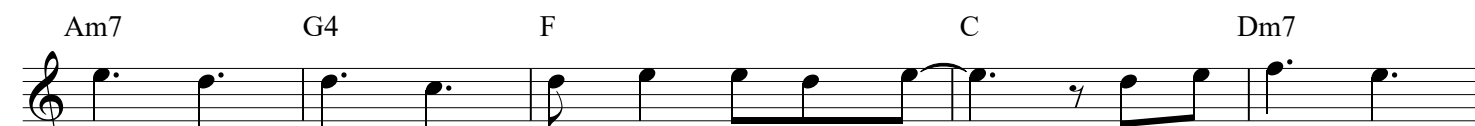
36 C/E Dm7 C/E G4 C



His king - dom is hum - ble and the bro - ken are blessed.

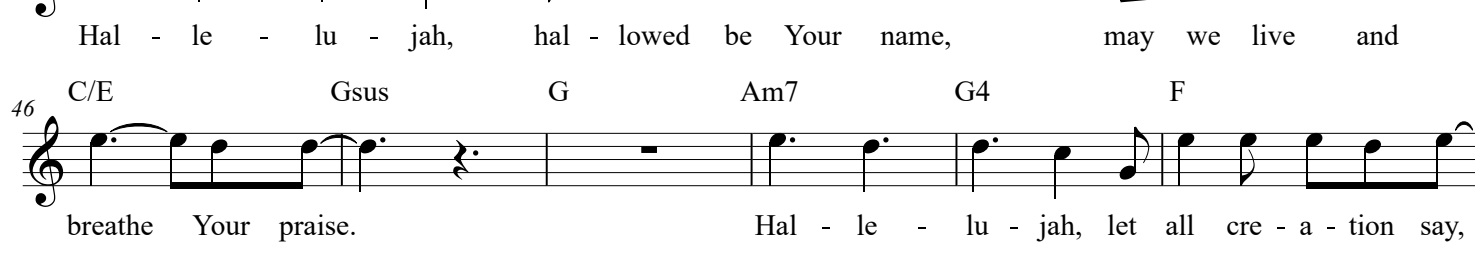
CHORUS

Am7 G4 F C Dm7



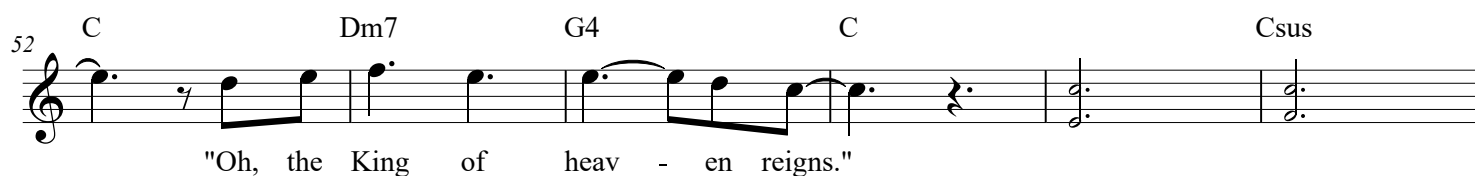
Hal - le - lu - jah, hal - lowed be Your name, may we live and

46 C/E Gsus G Am7 G4 F



breathe Your praise. Hal - le - lu - jah, let all cre - a - tion say,


52 C Dm7 G4 C Csus



"Oh, the King of heav - en reigns."


VERSE 3

58 F C Am7 F C



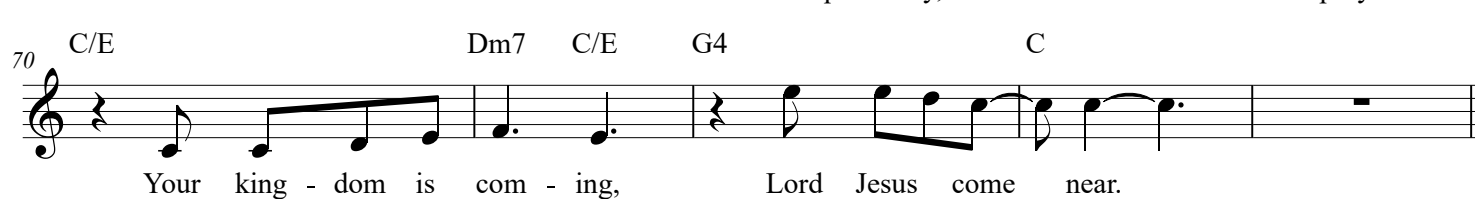
3. Your king - dom is com - ing, Your king - dom is here, a - live in our wait - ing,

64 G Am7 G4 F



at work in our tears. So come to us quick - ly, for - ev - er our prayer.

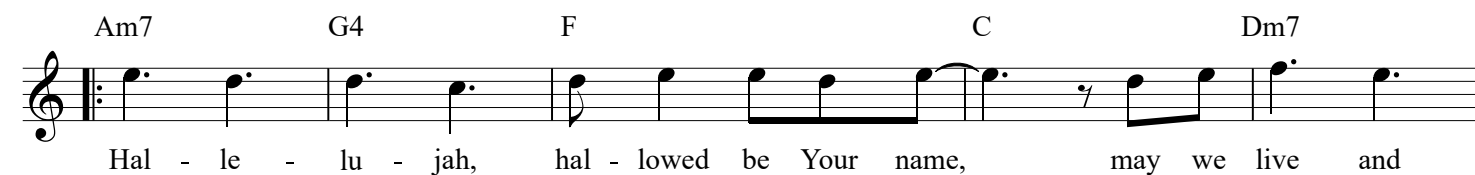
70 C/E Dm7 C/E G4 C



Your king - dom is com - ing, Lord Jesus come near.

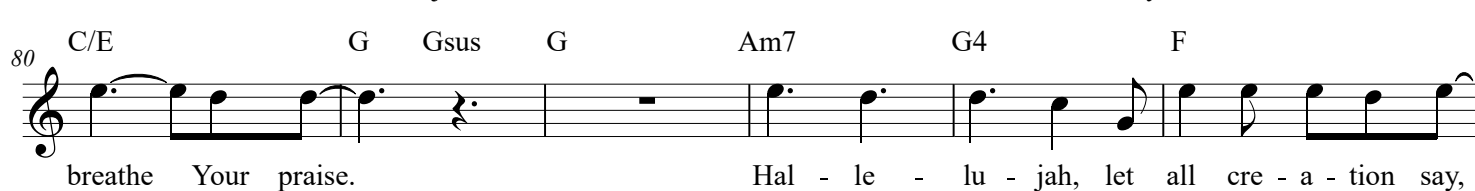
CHORUS

Am7 G4 F C Dm7



Hal - le - lu - jah, hal - lowed be Your name, may we live and

80 C/E G Gsus G Am7 G4 F



breathe Your praise. Hal - le - lu - jah, let all cre - a - tion say,

INTERLUDE

86 C Dm7 G4 C C

"Oh, the King of heav - en reigns." (reigns.)

VERSE 4

93 F/C C F/C F/C C

4. Your king - dom is back - wards,

100 Am F C Gsus

it flows in re - verse. What You call a treas - ure, this world calls a curse.

106 G Am C/G F C/E

The small be - come great and the last be - come first. Your king - dom is

111 Dm7 C/E Gsus C Dm7 C/E

back - wards, Lord, teach us to serve. As it is with Your king - dom,

CHORUS

116 G4 C F/C C Am7 G4

let it be with Your church. Hal - le - lu - jah,

123 F C Dm7 C/E G Gsus G

hal - lowed be Your name, may we live and breathe Your praise.

129 Am7 G4 F C Dm7 G4 C

Hal - le - lu - jah, let all cre - a - tion say, "Oh, the King of heav - en reigns."

136

(1) 2 TAG

C Dm7 G4 Am

(reigns.") Oh, the King of heav - en reigns.

142

F G C

Oh the King of heav - en reigns. —

The image displays a musical score for a song titled 'Simple Kingdom - 4'. It consists of two staves of music. The first staff begins at measure 136 and ends at measure 141. It features a key signature of one flat (Bb) and a 4/4 time signature. The melody is written in treble clef. Chords are indicated above the staff: C (C major) at measure 136, Dm7 (D minor 7) at measure 137, G4 (G major) at measure 138, and Am (A minor) at measure 139. The lyrics are '(reigns.)' at measure 136, 'Oh, the King of' at measure 137, 'heav - en' at measure 138, and 'reigns.' at measure 139. A 'TAG' section is marked above measure 140. The second staff begins at measure 142 and ends at measure 146. It also features a key signature of one flat and a 4/4 time signature. Chords are indicated above the staff: F (F major) at measure 142, G (G major) at measure 143, and C (C major) at measure 144. The lyrics are 'Oh the King of' at measure 142, 'heav - en' at measure 143, and 'reigns. —' at measure 144. The score concludes with a double bar line at the end of measure 146.

To God Be The Glory

Words by
Fanny Jane Crosby

Music by
William Howard Doane

♩=90

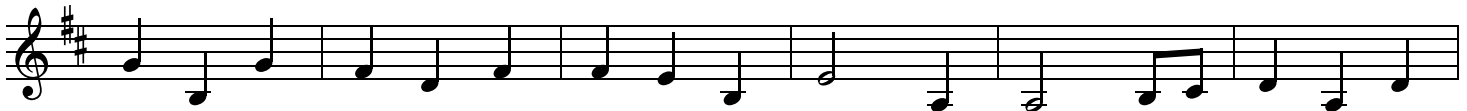
VERSE

A⁷ D A⁷ D D/F# A D



1. To God be the glo - ry— great things He has done! So
2. O per - fect re - demp - tion, the pur - chase of blood— to
3. Great things He has taught us; Great things He has done, and

5 G D E A A⁷ D A⁷ D D/F#



loved He the world that He gave us His Son, who yield - ed His life an a -
ev - 'ry be - liev - er, the prom - ise of God. The vil - est of - fend - er who
great our re - joic - ing through Je - sus, the Son. But pur - er and high - er and

11 A D D⁷ G D/A A⁷ D



-tone-ment for sin and o - pened the life gate that all may go in. Praise the
tru - ly be - lieves, that mo - ment from Je - sus a par - don re - ceives.
great - er will be our won - der, our trans - port, when Je - sus we see.

CHORUS

17 D D/F# A/E D A



Lord! Praise the Lord! Let the earth hear His voice! Praise the Lord! Praise the

22 A/G D/F# A/E D A⁷ D D/F#



Lord! Let the peo - ple re - joice! O come to the Fa - ther through

27 A D D⁷ G D/A A⁷ D

Je - sus, the Son, and give Him the glo - ry - great things He has done!